



THE ART OF *DARKNESS*

A series of dark, bold surfaces from Caesarstone,
including four dramatic new products debuting in 2020

THE ART OF DARKNESS

Caesarstone's new Dark Series embraces a contemporary trend in kitchens and bathrooms that has set a bold tone. As an antidote to light and sometimes austere color palettes, this softer mood is much more striking and unexpected. Today, black has been reconsidered as a modern classic, used as a stark accent or a powerful overall look. Furniture, tabletops, flowers and food are just some of the lifestyle elements that have turned to black. Dark slate and stone, along with oxidized metal and black lacquered wood, are among the remarkable materials being combined in dramatic interiors and hospitality spaces.

From the classic luxury of Empira Black™ to the matte infinity of Piatto Black™ via the evocative patinas of rusted Oxidian™ and weathered Black Tempal™, the Dark Collection presents an intriguing range of captivating hues that bring warmth to the home and an emotional caress to the stone. Black Tempal, Oxidian and Piatto Black are enhanced by a new Natural Finish, which has a subtle texture that can be seen as well as felt, bringing much warmth to its range – and adding extra depth to its textural darks.





There is a warm intimacy that comes with the dark; a sense of quiet and calm that cossets and cocoons, that creates an atmosphere that encourages us to gather and eat and drink. A different mood descends. Taste, touch, scent and sound, all elevated.

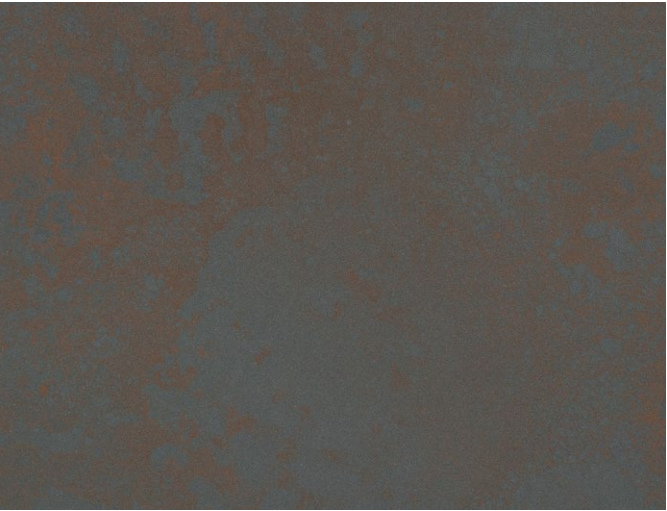
In the dark, our senses come alive.

MOR KRISHER
CHIEF DESIGNER

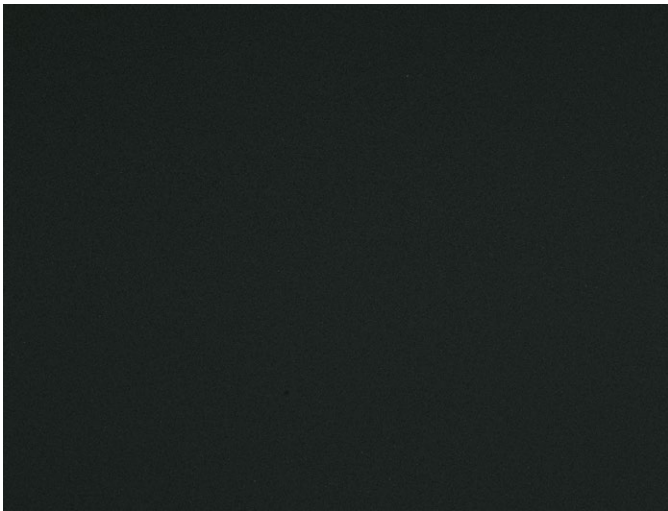
New products



5810 / **Black Tempal**
Natural finish



4735 / **Oxidian**
Natural finish



3101 / **Piatto Black**
Natural finish



5101 / **Empira Black**
Polished finish

Natural finish

The delicately textured Natural finish conjures up the emotional caress of stone; adding warmth to the grain so it's pleasing to the touch. A satin sheen that gently reflects light – captivating the viewer and enhancing the depth of a color, especially in these darker shades. The new Natural finish combines an appealing texture enjoyed with each touch, along with the practicality of minimal care and maintenance synonymous with all Caesarstone products.

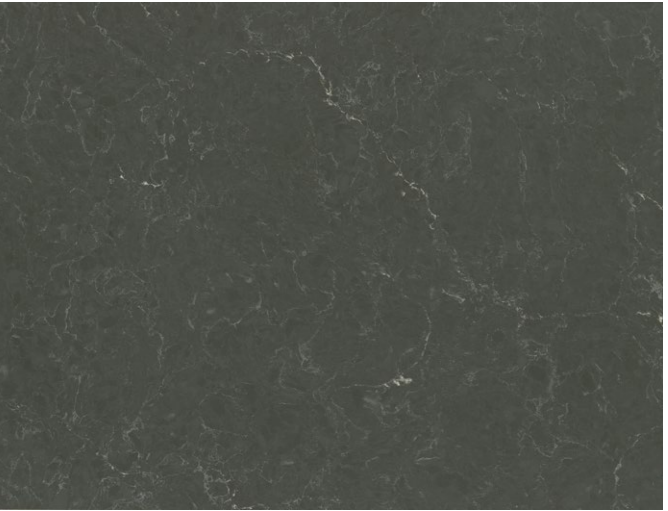
Polished finish

This high gloss polish evokes luxury and modernity, bringing out the best in the color by emphasizing its features in high definition. Reflecting the shine of the times, it attracts light and illuminates kitchens, bathrooms and laundry rooms, naturally making them look larger. This durable surface is smooth to the touch and requires minimal care and maintenance, lasting for the long-term. Effortlessly elegant, our Polished finish feels both timeless and contemporary, adding sustained value to any residential, hospitality or commercial interior.

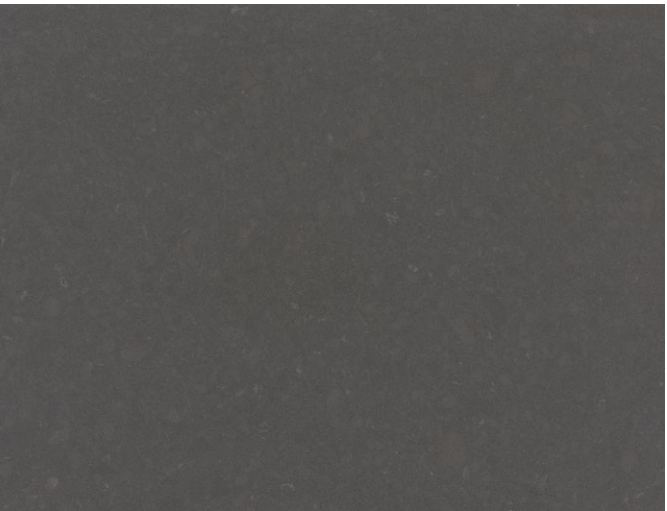
The Classics



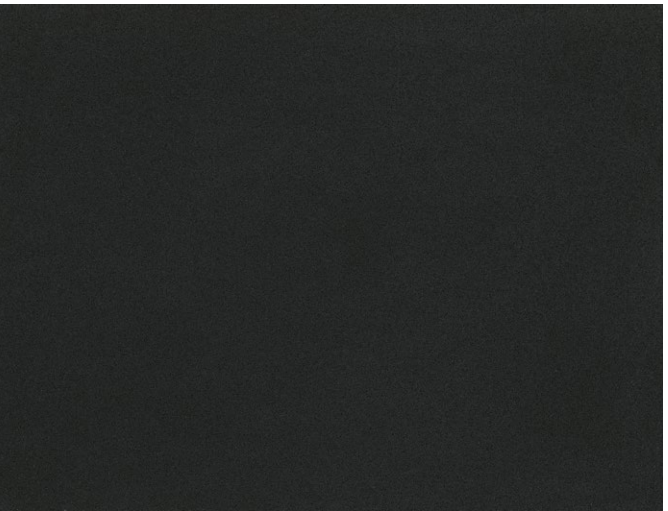
5100 / **Vanilla Noir**
Polished finish



5003 / **Piatra Grey**
Polished finish



4120 / **Raven**
Polished finish



3100 / **Jet Black**
Polished finish

Length

3040 mm (nominal)

Width

1440 mm (nominal)

Thickness

20 mm / 30 mm (nominal)

Weight

220 kg / 330 kg

Designing

DARKNESS

Caesarstone's Head of Design, Mor Krisher, describes the design process behind the new dark series

We look for inspiration everywhere and in order to design a series of products that truly captured the trend for dark interiors and kitchens, we turned our attention to the outside world, to the desert landscapes where natural stones are scorched by day and frozen by night, weathered by this endless cycle to produce the most wonderful patinas and textures.

We studied a huge variety of black and dark stones and they all had their own characteristics, some very simple and minimalist and some which were full of detail and vibrancy. They all evoked different feelings within the design team; some stones felt naturally warm and comforting, while others had patterns and texture that felt epic in scale, reminiscent of the vast and rugged landscape from which they came.

We knew that it was essential to define these details in the new collection, to understand the different characteristics so that we could bring these elemental aspects of nature into people's homes.

There is an organic quality to Caesarstone products, and this is just as important with dark colors as it is with our marble and granite styled surfaces. This is what we want in our homes, a visual and tactile connection to the outside world.

We've been working on our dark collection for several years. Black and dark colors are a rising trend in interior design. Dark colors are bold and dramatic. They can have within them so many different nuances, tones and tactilities that give them different character. They can be basic or sophisticated, daring or elegant, industrial or classic, traditional or modern.



As designers, we look for inspiration everywhere around us. We like to observe and experiment with different processes, materials, technologies and objects from nature. The world of stone is a major inspiration and for this collection we looked at dark natural stones like - basalt, black granites and marbles. We looked at their different characteristics and how they change over time after exposure to the elements.

After experimenting using various techniques and references inside our studio we developed some interesting directions for our new dark collection.

We decided to go outdoors and take a journey to the desert to observe nature and explore the organic materials there. We were hoping to open up to a well of new ideas and inspirations and we succeeded in doing just that.

We began exploring the desert's terrain.

There's an infinity to the desert with its beautiful minimalism, continuous landscapes and open vistas. It has a stillness and a silent power.

A closer look reveals that the desert is full of details. It has different contours, endless textures, colors and lifeforms.

A rich ecosystem of life and new sensations begin under the night sky. The darkness of night wraps you in a warm intimacy. It can give a sense of hominess and a special calm and quiet. A type of cocoon or envelope where inside, people gather together. It creates a totally new atmosphere where we feel and experience a different ambiance. In the night different senses are elevated - taste, scent, touch, and sound.

Stone can be full of mystery. It holds history inside. We can learn a lot from stones. To the touch it can be very pleasing, organic, tactile and warm. The stone around us creates atmosphere and awaken feelings and emotion within us.

We wanted to see how various stones hold colors, tones, pigments at night.

Night changes our perception of what's around us. Just like the night, the Piatto Black redefines the interiors. Everything gets a new dimension, an infinite magnitude.

The desert comes alive after sunset.



Dark colors can be modern or timeless. They can be minimalist or full of detail, monochromatic or saturated with hues of color. Dark colors can be dramatic, bold and mysterious or warm and comforting; simple or sophisticated. Our senses are heightened in the dark and with darkness comes a world of calm and comfort as we return to our homes at night. Dark tones are an entirely rich world of inspiration.

New for 2020

Empira Black

5101

Empira Black is a creative interpretation of dark marble. It's a design beyond time and trend. With all the mystery of a dark stone, Empira Black has a dark base composed of rich, deep black; beautified by fine white natural veins.



New for 2020

Black Tempal

5810

Black Tempal has a complex composition of mineral-like layers. It captures the qualities of natural stones like travertine and slate. Warm whites expand across the slab, in contrast to its black base.

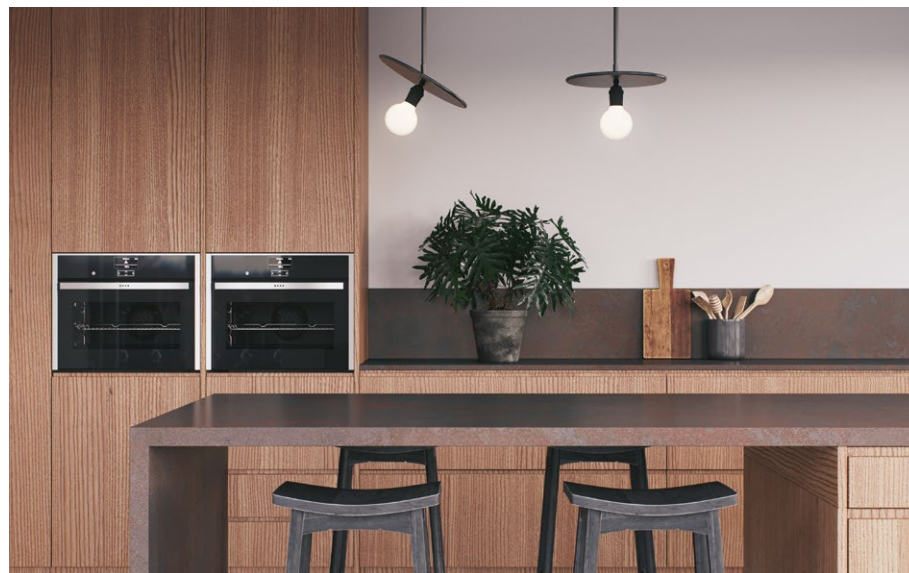
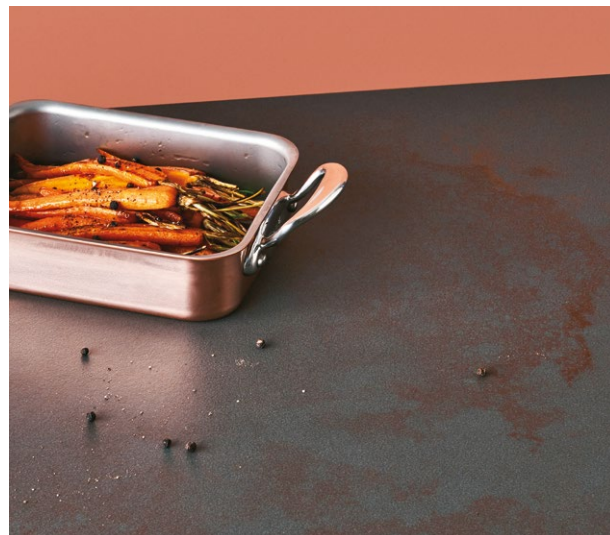


New for 2020

Oxidian

4735

Oxidian bears the qualities of transformed alloys like bronze, steel and cast-iron and an aesthetic of oxidized rust and weathered patinas. It blends well with other industrial materials like concrete. Its dark grey satin base has true depth, with an unevenly dispersed oxidized russet effect.



New for 2020

Piatto Black

3101

Piatto Black is the ultimate dark. Its fine granular appearance is complemented by a textured finish; enhancing a deeper, more intense black. Highly durable, this captivating material guarantees the ease and care synonymous with all Caesarstone products. Piatto Black has been designed with versatility in mind.



The Classics

3100
Jet Black



4120
Raven



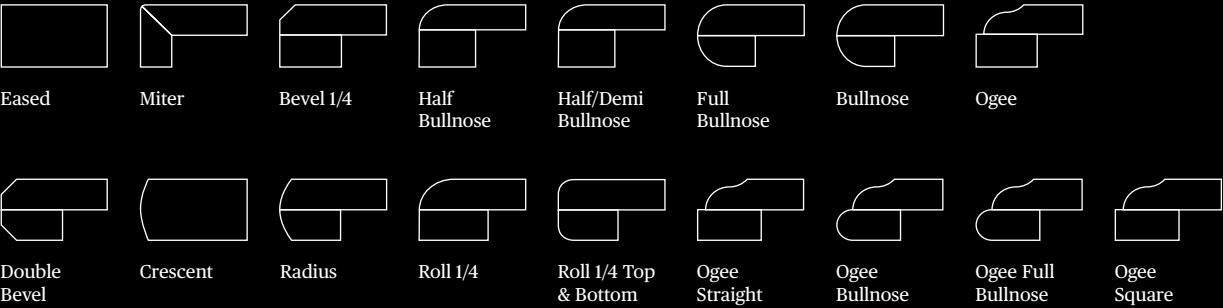
5003
Piatra Grey



5100
Vanilla Noir

Test Results

| Property | Test Standard | Results |
|-----------------------------|---------------------------------------|---|
| Water Absorption | ASTM C97 EN-14617-1 | ≤0.05% |
| Density | ASTM C97 EN 14617-1 | ≥2.1 gr/cm3 |
| Flexural Strength | ASTM C880/C880M-15 EN 14617-2 | 35.5-77.5 MPa 43-80 MPa |
| Dimensional Stability | EN 14617-12 | Class A |
| Impact Resistance | EN 14617-9 | 5.0-14.4 L (J) |
| Compressive Strength | ASTM C170 EN 14617-15 | Dry: 219-299 MPa; Wet: 203-274 MPa 157-243 MPa |
| Abrasion | ASTM C1243-93 EN 14617-4 | Volume of chord: V=59.2-107.2 mm3 Chord length: 22.0-22.6 mm |
| Freeze-thaw Resistance | ASTM C1026 EN 14617-2 & EN 14167-5 | No obvious damage after 20 freeze-thaw cycles KMf25=95.1-117.7% |
| Stain Resistance | ANSI Z 124.6 | Pass |
| Chemical Resistance | ANSI Z 124.6 EN 14617-10 | Pass Class C4 |
| Linear Thermal Expansion | ASTM 372 EN 14617-11 | 30°C-100°C: 3.0-5.0 x 10-5 per °C 13.4-26.4 (10-6 C-1) |
| Thermal Conductivity | EN 12664 | 0.445-0.475 W/(m·K) |
| Thermal Shock | EN 14617-6 | No visual defects after 20 cycles Change in mass: 0.04% to 0.06% Change in flexural strength: -6.7% to 9.3% |
| Boiling Water Resistance | ANSI NEMA LD3-3.5 | No effect |
| High Temperature Resistance | ANSI NEMA LD3-2005 | No effect |
| Surface Burning | ASTM E84 | Class A |
| Fire Performance | AS 1530.3:1999 | Ignitability Index (0-20): 6-8 Spread of Flame Index (0-10): 0-3 Heat Developed Index (0-10): 2-3 Smoke Developed Index(0-10): 6-7 |
| Fire Classification | EN 13501-1 | Wall cladding: B-s1-d0 Flooring and stairs: B-fl-s1 |



Some variation in color and pattern can occur. We always recommend viewing a full slab or product installation as part of your selection process. Samples represent only a small area of the overall color scheme and may not be illustrative of the entire pattern, texture or tone that can occur across the full slab. Images, including illustrations of full slab patterns and colors can be found a caesarstoneus.com

Virtually maintenance free, Caesarstone's hard, non-porous surfaces are simple to clean and require no sealing to renew their luster. In most cases, soap and water or a mild detergent is enough to keep your Caesarstone surfaces looking like new. If necessary, you can use a non-abrasive soft soap along with a non-scratch or delicate scrub pad. Afterwards, thoroughly rinse with clean water to remove residue. Please note that Caesarstone finishes other than polished may require increased daily maintenance due to their distinctive appearance.

For added peace of mind, Caesarstone products come with a Residential Lifetime Warranty.

Quality and service

Caesarstone has received worldwide recognition for its commitment to quality, safety and environmental standards. Each one of our surfaces is carefully inspected to ensure that it meets the highest level of international quality standards.



To see the entire collection visit www.caesarstoneus.com

