

# MAINTENANCE & CLEANING

# MAINTENANCE

## DAILY MAINTENANCE

### Simple to Maintain

- For everyday use and removal of fingerprints, grease stains, food residues, liquids and dried liquids, it is recommended to clean the Diresco surface with plenty of warm water, a neutral cleaning agent and a clean damp cloth. Dry the surface with a soft cloth and be careful when washing-up detergents. It is important to rinse the surface properly afterwards to avoid a detergent film from forming.

- Glass cleaner can be used as a quick and temporary solution. Make sure the glass cleaner does not contain alcohol or silicon-based cleaning agents. The pH value of the cleaning agent must be between pH5 and pH9.

- Liquids such as tea, wine, coffee and vegetable/fruit juices should be removed immediately. Although these liquids cannot penetrate the surface, they can stick to it. This can lead to persistent stains.

- Finger marks can be easily removed from a polished or velvet surface with a suitable glass cleaner.

## WEEKLY MAINTENANCE

### A Simple and Proper Clean

For a weekly or more thorough cleaning, we recommend using our "Quartz Cleaner". Using our "Quartz Cleaner" can be carried out in 5 easy steps:

1. Remove the biggest stains from the surface with a soft sponge
2. Rub a small amount of "Quartz Cleaner" onto the stain with a wet sponge
3. Let soak for 5 minutes
4. Rinse with sufficient water until all residues have been removed
5. Dry with a cloth

Pay careful attention to the "Quartz Cleaner" usage instructions. The Diresco "Quartz Cleaner" ensures an optimal and pure result thanks to the unique formula. The "Quartz Cleaner" is available from the dealer where you purchased your quartz surface.

Never use a scouring agent, scouring sponge or steel wool. This can damage the surface and cause dull spots.

## PERSISTENT SOILING

- Dried-on stains, silicon stains or hydraulic lime deposits are examples of persistent stains which require extra attention.

- Use a suitable cleaning product only after consulting with your supplier. It is important to use a soft sponge, microfibre cloth or kitchen roll to prevent damage to the surface.

### Abrasive substances

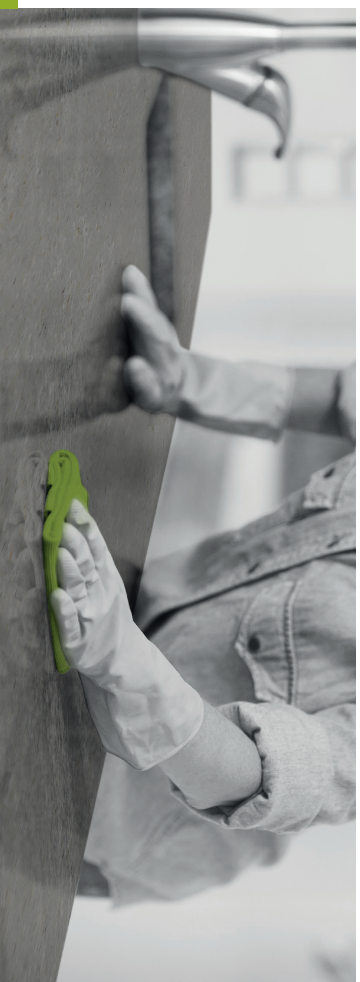
- Make sure you do not use cleaning agents that contain chlorine, coloring agents, acids, ammonia, acetone or chemical substances. Products with a pH value above 10 or some dishwasher tablets must be avoided.

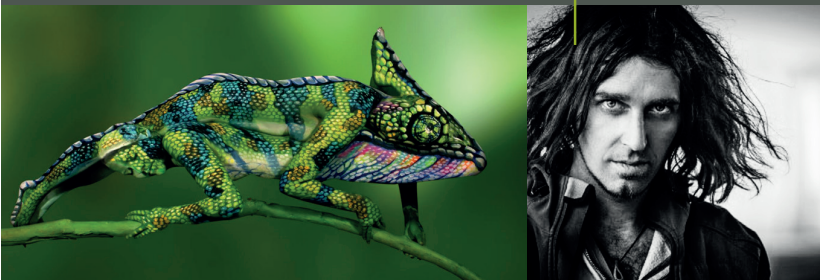
- Certain aggressive chemicals such as oven cleaners or drain cleaners can cause lasting damage to the surface. Trichloroethane, methylene chloride, paint stripper and cleaning agents with a high alkaline value must be avoided. Don't use marble powder or silicon-based cleaning agents.

- If such substances do by chance end up on the surface, it's advisable to immediately remove these with pure water and a neutral cleaning agent. Avoid contact with marking or printing inks.

### Best-known anti-stain/maintenance products

Akemi: [www.akemi.com](http://www.akemi.com)  
Möller-Fein-Service: [www.moellerfein-service.eu](http://www.moellerfein-service.eu)  
Lithofin: [www.lithofin.eu](http://www.lithofin.eu)  
Diresco Quartz Cleaner: [www.diresco.be](http://www.diresco.be)





**BODY ART ILLUSIONS BY  
JOHANNES STOETTER**

Is it a chameleon or is it two ladies? It depends on your perspective. Austrian bodypaint artist Johannes Stoetter is an expert in creating optical illusions. He made this masterpiece exclusively for us. Completely Touched by Nature. Completely Diresco.

