

DISCOVER THE
BEAUTY OF NATURE
DISCOVER DIRESCO

INSTALLATION - OUTDOOR KITCHEN



INSTALLATION - OUTDOOR KITCHEN



This manual provides general information regarding the design and installation of an outdoor kitchen. It is essential that all Fabricators and Installers attempting to work with Diresco BIO-UV Quartz possess the proper knowledge, tools and safety equipment to produce an excellent final product. All Technicians involved in the handling and working of Diresco BIO-UV Quartz, must have proper training. Adhere to the recommendations laid forth in our 'Golden Rules Book - Fabrication Manual' to assure a quality finished product.

Diresco recommends the use of 3cm Velvet finish material when applying Diresco BIO-UV Quartz for exterior applications.

Thank you for choosing Diresco.

North America

www.DirescoUSA.com
info@DirescoUSA.com
949.229.0959

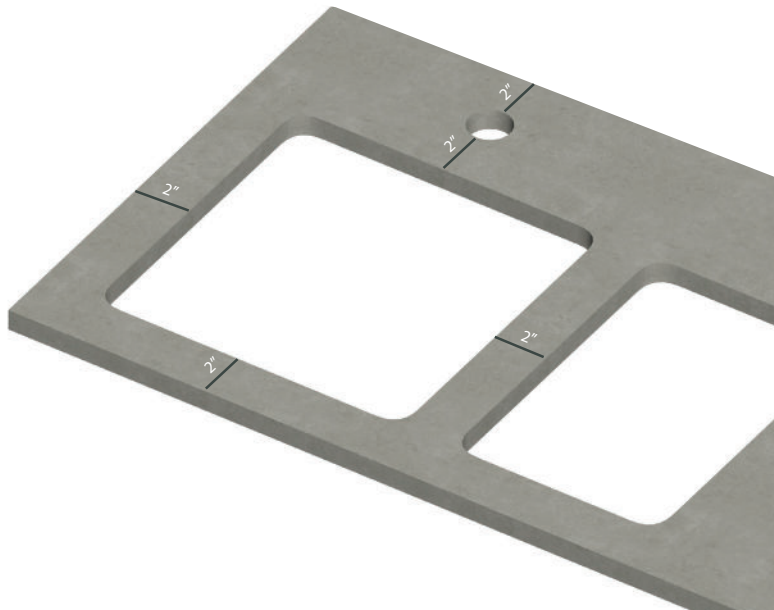
Belgium

www.Diresco.be
info@Diresco.be
+32 (0)89 85 69 44

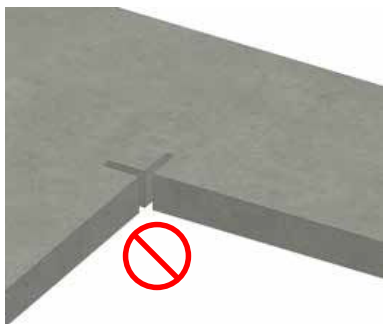
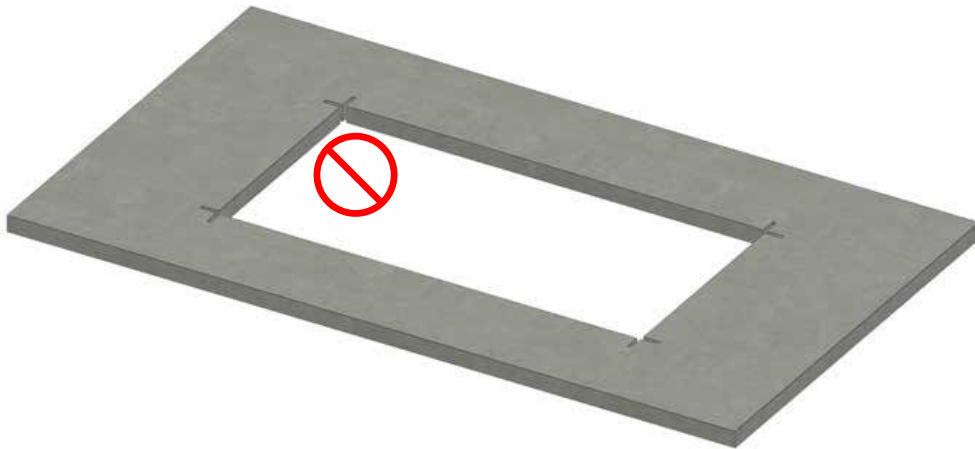
FABRICATION

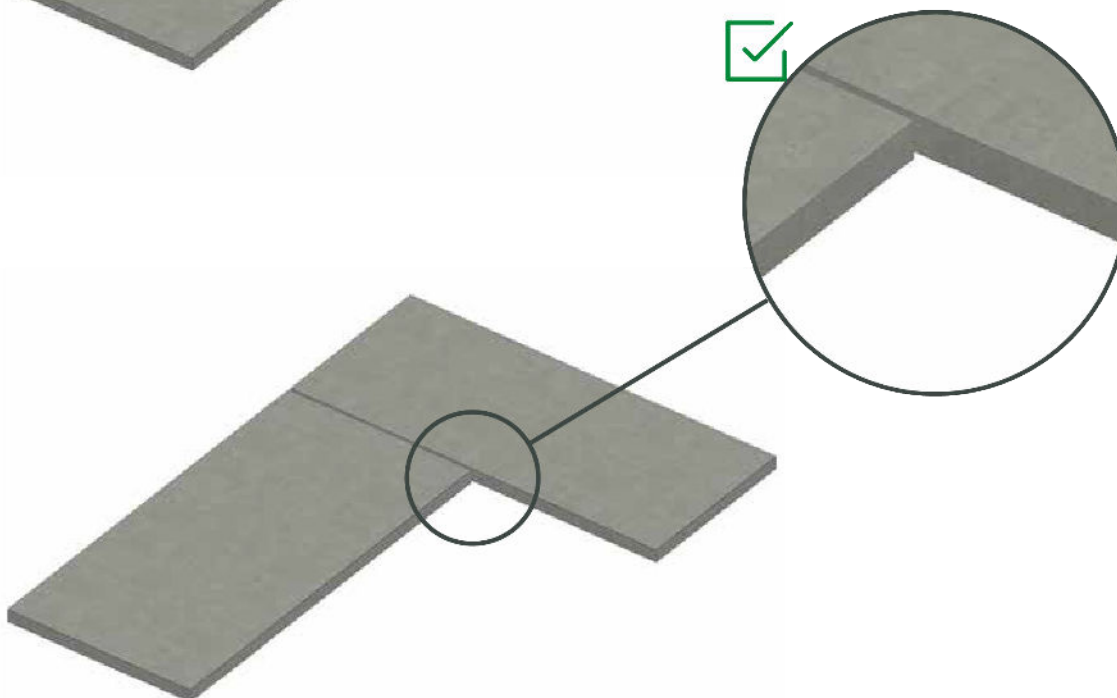
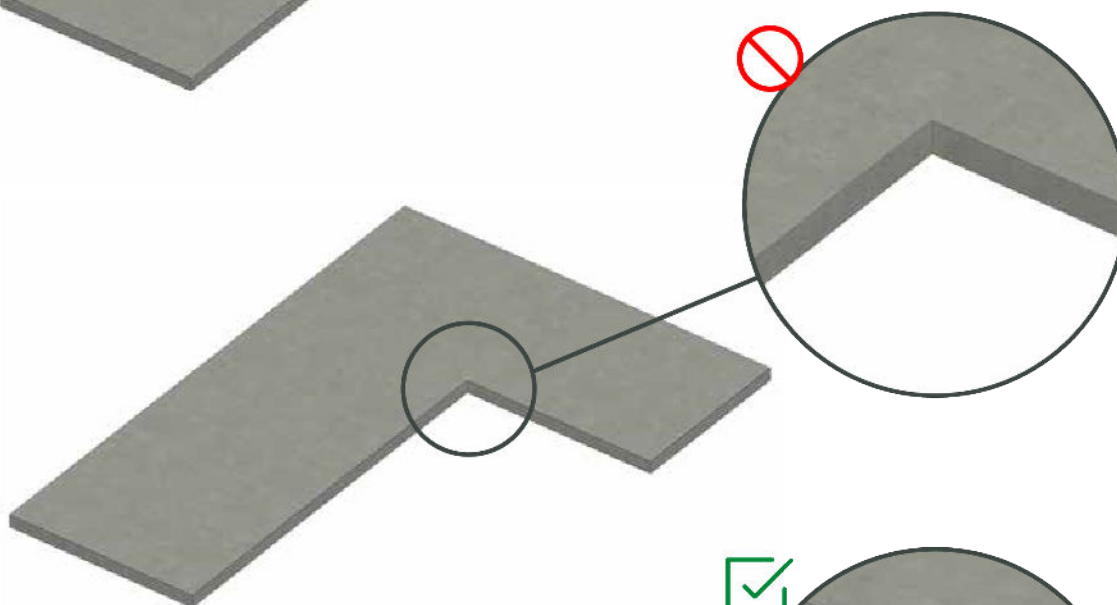
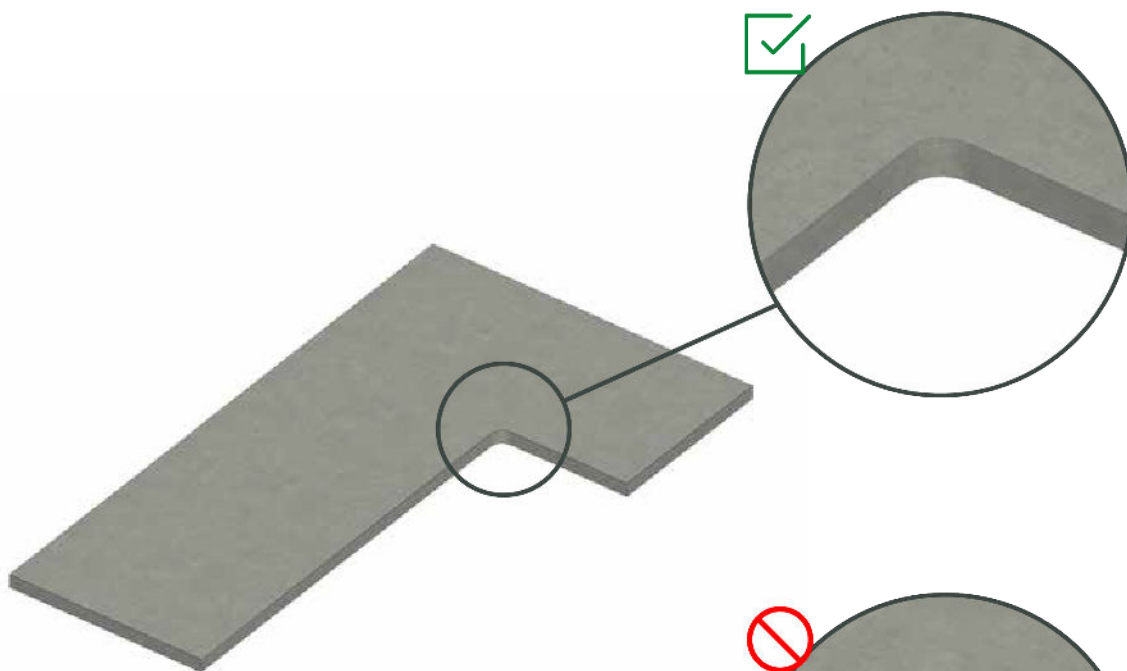
CUT OUTS

We recommend that a minimum distance of 2" should be maintained in between the cut outs.



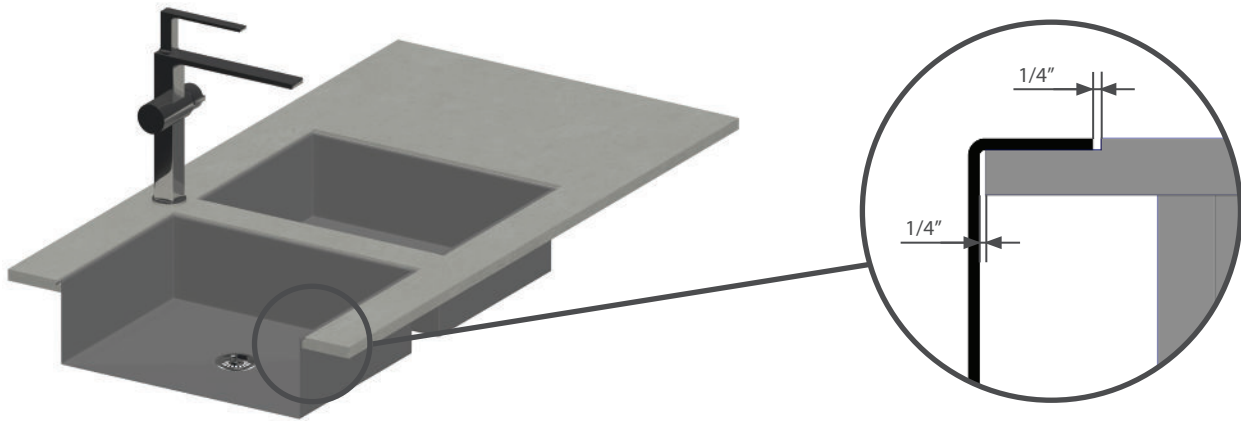
The following images show the cutting technique to be avoided. Always use a rounded 3/4" radius.



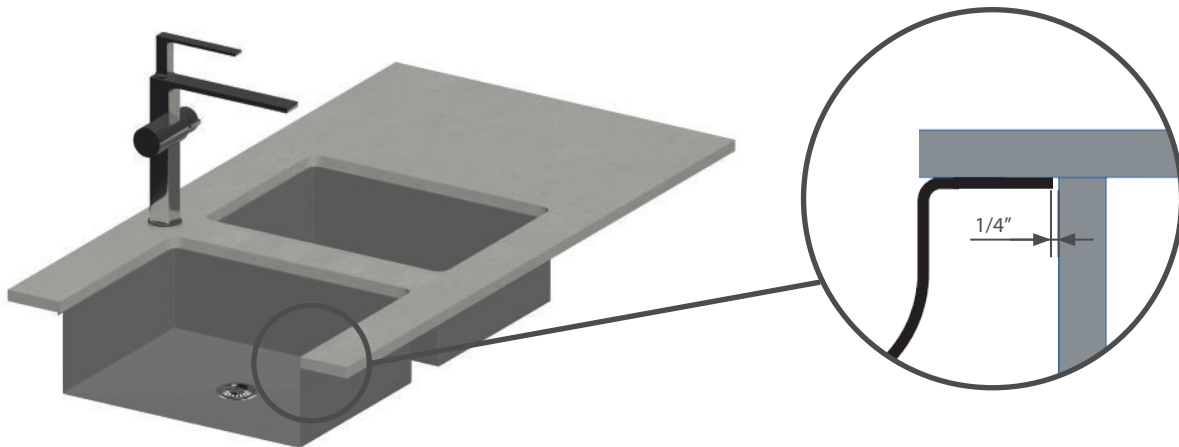


SINKS

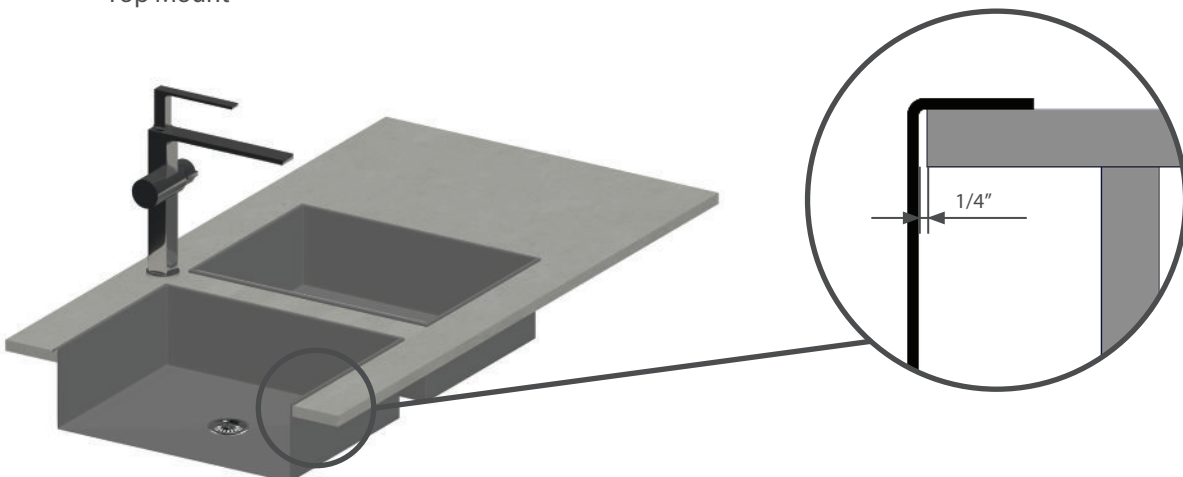
Flush Mount



Under Mount



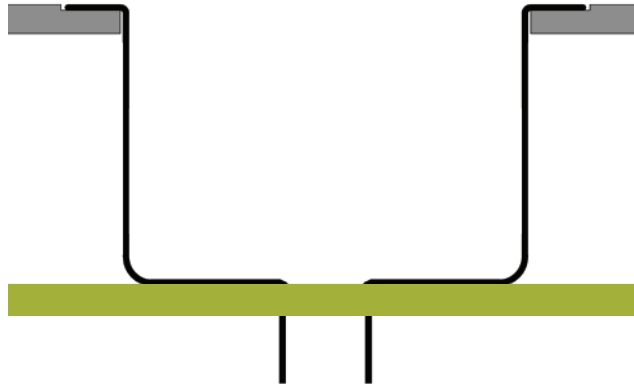
Top Mount



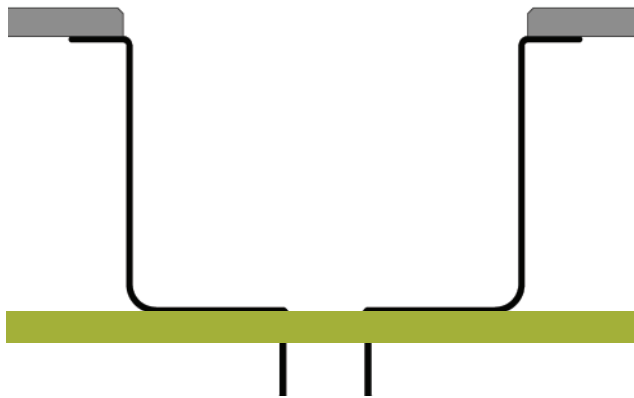
SINK SUPPORT STRUCTURES

Sinks - Provide sufficient support and install a full support rail/beam underneath sink.

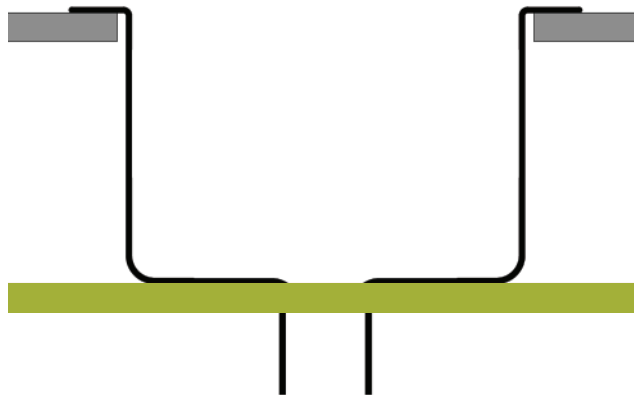
Flush Mount



Undermount

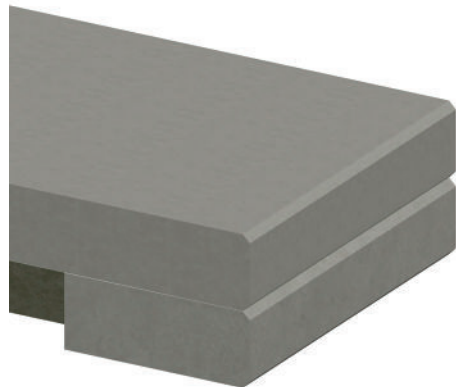


Top Mount



EDGE FINISH

Diresco quartz offers a wide range of possibilities in edge finishing that greatly influence the kitchen's appeal. Here below you find some examples. Always provide adequate support for mitered edges. Always remove the residual water from the surface, and never let it dry up.



CLEANING

After cutting, always clean the finished pieces adequately with a professional composite cleaner after production, to remove the machining dirt/debris.

Always use sufficient water during polishing (edge finishing, wet areas/drain grooves, recessed drain).

Never allow any water to remain or dry up on the surface, use a separate and clean non-contaminated squeegee to remove the water from the surface. Failure to remove water can result in permanent surface corrosion due to the alkaline dust (present in natural stone).

HANDLING FABRICATED MATERIAL

Make all necessary observations before moving the finished pieces.

- Always provide adequate support, especially if there are cut outs or any recessed areas
- Always transport the material in a vertical upright position.
- Make sure all suction cups are clean.
- Ensure Diresco BIO-UV slabs and Diresco machined workpieces are always supported before, during and after the fabrication and installation process.

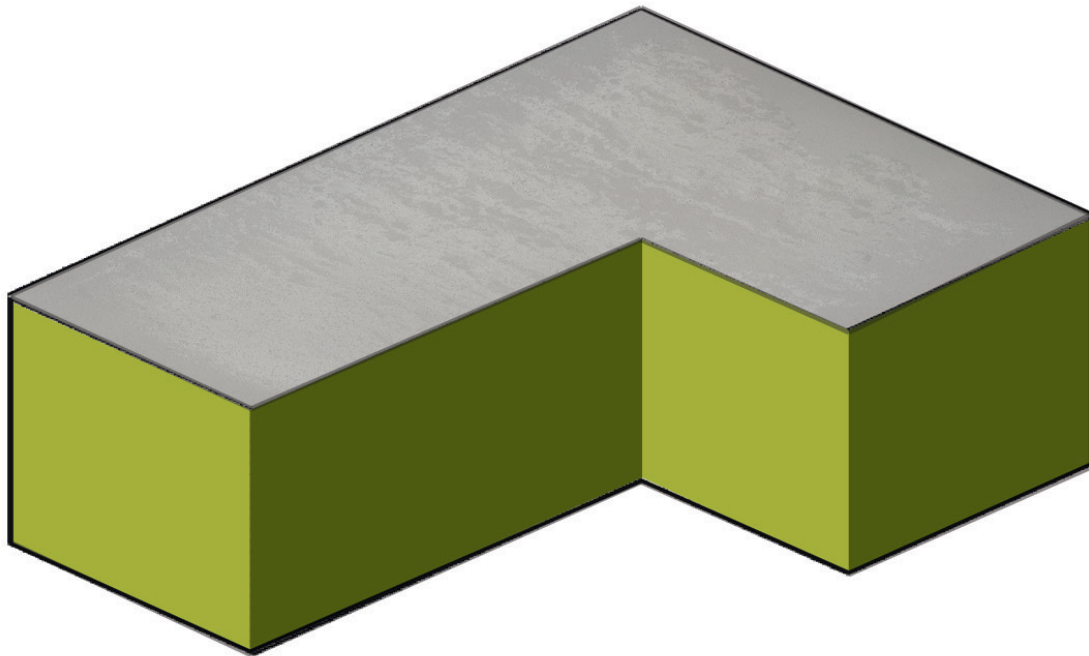
STORING FABRICATED MATERIAL

Finished pieces are best stored away from direct exposure to UV light/moisture and inside a dry and dust free environment. Material must be stored in a vertical position and on an A-frame. Make sure material is fully supported.

Make sure that the polished face of the finished piece does not come into contact with items (including 'slab dividers' or 'protectors') that might carry any silicon residue and/or alkaline dust that can permanently mark (contamination) the finished slab face.

UNDERNEATH SUPPORT FOR OUTDOOR COUNTERTOP

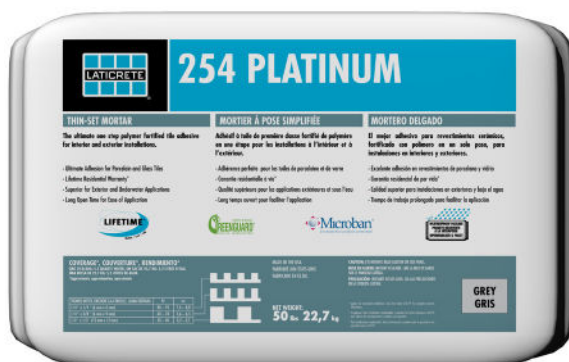
In order to avoid potential breakage make sure to have full support under the material. We recommend the use of concrete board. Plywood or marine plywood are subject to increased swelling due to thermal expansion and contraction and must **never** be used.



Diresco BIO-UV Quartz must be laid on a flat, level and structurally sound substrate. The substrate must span the entire surface area of the workpiece. Diresco recommends the use of concrete board anchored to the cement block or structure below. Once the substrate has been installed, check to ensure the substrate is perfectly level.

HOW TO BOND DIRESCO BIO-UV QUARTZ TO CONCRETE BOARD

You must use either a polymer based epoxy or thin set to adhere Diresco BIO-UV Quartz to concrete board. Never use Silicone, Caulking, Liquid Nail or similar glue. The adhesive used must be climate appropriate.



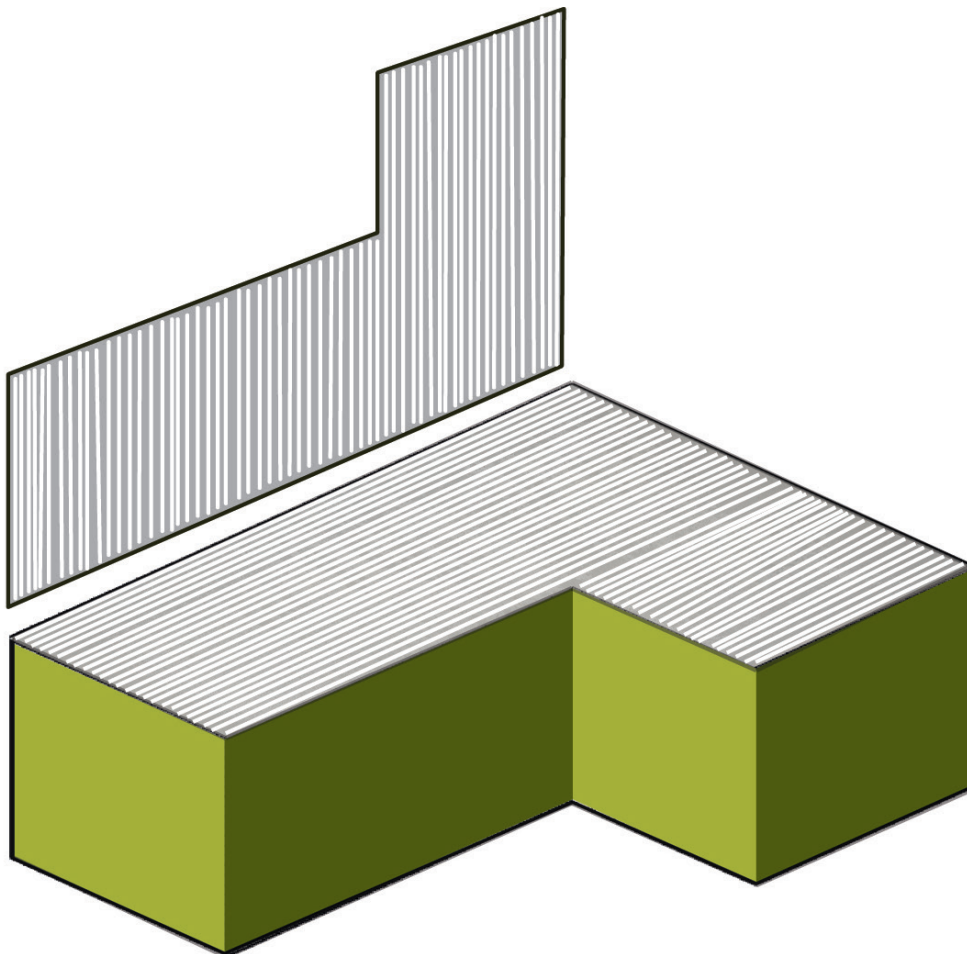
For the purpose of example - Laticrete - 254 Platinum is an appropriate product for adhering Diresco BIO-UV Quartz to the concrete board substrate.

HOW TO APPLY THIN SET

Clean both, the concrete board substrate and back of the Diresco BIO-UV Quartz countertop. It is important the surfaces in contact with the thin set be free of all dirt and debris in order to increase the bonding force.



Using the double bonding method, apply adhesive to both surfaces, the concrete board substrate and back of the Diresco BIO-UV Quartz using a Notched Trowel 10mm, in perpendicular directions.



HANDLING & INSTALLING MACHINED WORKPIECES

The process of handling and installing machined workpieces requires tremendous care and awareness. All material must be handled with the utmost control, paying attention to corners and cutouts.

To avoid chipping of the top at the time of installation Diresco recommends the use of adhesive tape, cardboard or shims to protect the joint edges during positioning, and performing final positioning by means of a vacuum clamp seaming tool.



BEST PRACTICES

The process of handling and installing machined workpieces requires tremendous care and awareness. All material must be handled with the utmost control, paying attention to corners and cutouts.

For a cooktop, range, or BBQ insert cut out we require 2 layers of the insulation tape as long as minimum thickness of each layer is 0.11"/layer and a minimum weight of 9.5 oz/yd²/layer.

This product (please see link) from 3M is suitable. Link to 3M product: <https://bit.ly/2NV3Nkb>

The gaps and tolerances for Diresco installed in an exterior application are:

Any and all cut-outs for the BBQ's, cooktops, and ranges must be a minimum 3/4" radius.

The inside edge must be smooth around the interior of the cut-out.

Remove cut lines and chipping before applying the heat tape. (Minimum 120 grit is recommended)

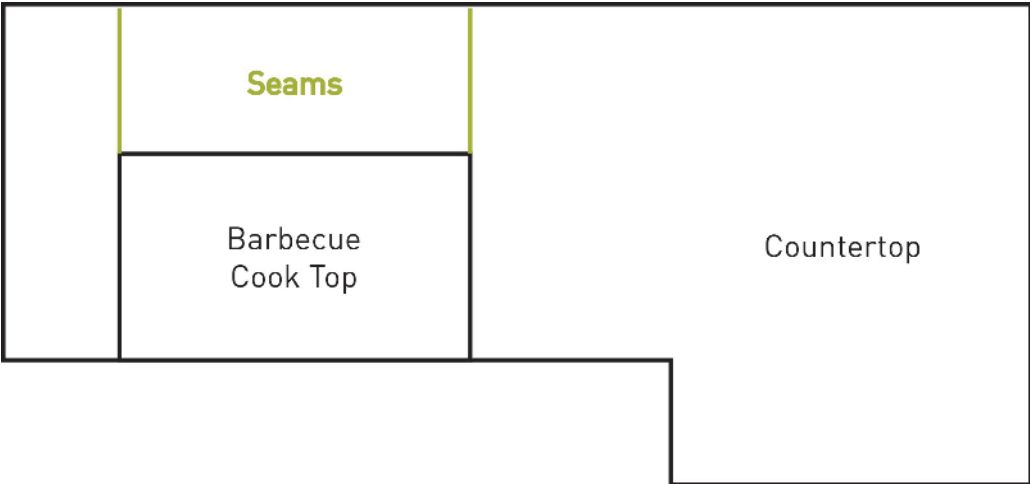
Ease the top and bottom edges of the cut-out.

Provide a minimum gap of 1/2" between BBQ and the edge of cut-out.

The barbecue must be held up by a suitable substrate rather than rest directly on the finished surface. This solution means the weight of the barbecue is not borne directly by the edges of the top.

Make sure there is adequate support under the substrate. It is imperative the substrate does not bow or fail in the future. Provide sufficient support by installing a full support rail/beam underneath substrate.

If there is a wall behind the countertop it is highly recommended to make 1/4" seams following the cooktop edges.



OVERHANGS

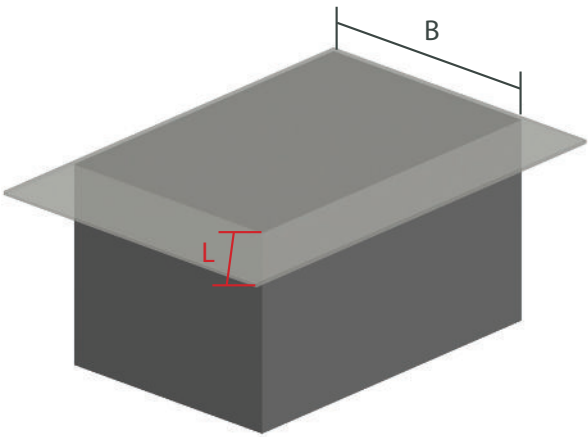
The table below provides the calculation of the maximum allowed overhang, taking into consideration the slab thickness and the width of the support.

Exceeding the maximum allowed weight can lead to the cracking or breaking of the slab. Do not sit or stand on any overhang.

In case of special structures, we recommend that you consult a qualified professionals.

(B) Maximum Overhang (L) Without Support - Point Load 220 lb.

Width	3cm
12"	8"
16"	9.5"
19.5"	11"
23.5"	12"
27.5"	13"
31"	14"
35"	15"
39"	16"



USE OF ADHESIVES

Use adhesives that have a very high resistance to shock and impact loads. Check with your supplier for a wide variety of colored adhesives for almost any application.

When using adhesives (always acid free) for a joint, first make sure that the material's edges on both sides of the joint are taped off with a good quality - solvent free - tape to prevent staining when trying to remove excess epoxy next to the joint.

In particular, the anticato finish of Diresco requires extra attention as the rougher and open surface makes it very difficult to remove residue of glue/silicone afterwards.

When removing any residues of epoxy, do not put contaminated cloths or items on the stone surface. Due to their composition, some products (f.i. acetone, epoxy removers, nail polish remover, etc.) can permanently damage the surface finish of the Diresco BIO-UV surface and should never be used. Even when a product evaporates immediately (f.i. acetone), a damaging invisible layer remains behind.

Always follow the manufacturer's instructions.

For lamination and joints we recommend an outdoor – epoxy bonder like Integra Bonder Ultra

